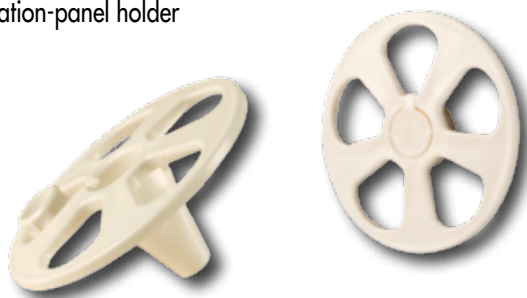


Klimax insulation-panel holder

Ideal fastening of wood-fibre insulation elements

Klimax

insulation-panel holder



Art. no.	Dimensions (mm)	PU
945251	Ø 60	400

- For soft insulating materials

Energy-saving measures are becoming increasingly important in the construction of new houses and also enjoy state support!

Decoupling the individual fastening components avoids the creation of thermal bridges.

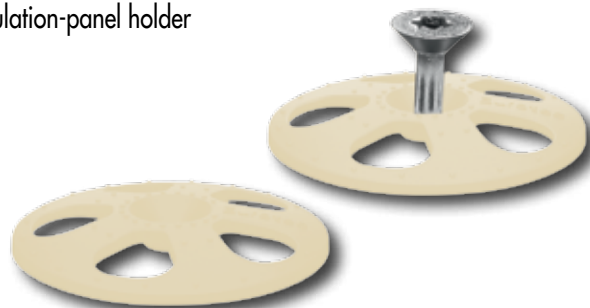
Good insulation results in an extraordinarily comfortable environment.

The Klimax insulation-panel holder, in conjunction with the Paneltwistec screws from Eurotec, offers an ideal combination for fastening wood-fibre insulation elements.

The prerequisite for this is a load-bearing timber substructure.

Klimax-slim

insulation-panel holder



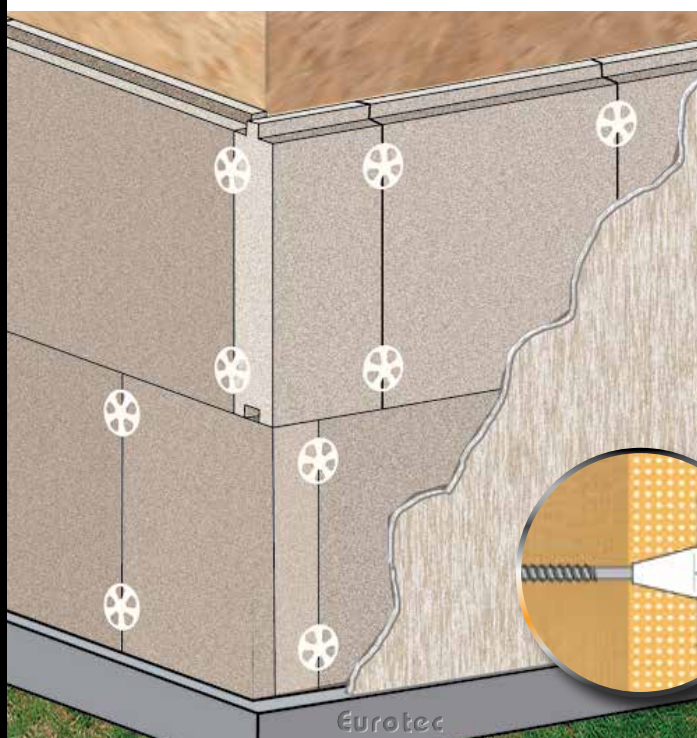
Art. no.	Dimensions (mm)	PU
945987	Ø 60	900

- For harder insulating materials

**Suitable screws for our Klimax insulation-panel holders:
Paneltwistec AG countersunk-head screws**



Art. no.	Dimensions (mm)	Drive	PU
945583	6,0 x 60	TX30 ●	200
945584	6,0 x 70	TX30 ●	200
945632	6,0 x 80	TX30 ●	200
945633	6,0 x 90	TX30 ●	100
945634	6,0 x 100	TX30 ●	100
945636	6,0 x 120	TX30 ●	100
945637	6,0 x 130	TX30 ●	100
945638	6,0 x 140	TX30 ●	100
945640	6,0 x 160	TX30 ●	100
945641	6,0 x 180	TX30 ●	100
945642	6,0 x 200	TX30 ●	100
945643	6,0 x 220	TX30 ●	100
945644	6,0 x 240	TX30 ●	100
945645	6,0 x 260	TX30 ●	100
945646	6,0 x 280	TX30 ●	100
945647	6,0 x 300	TX30 ●	100



Klimax insulation plug

For fastening composite thermal insulation systems

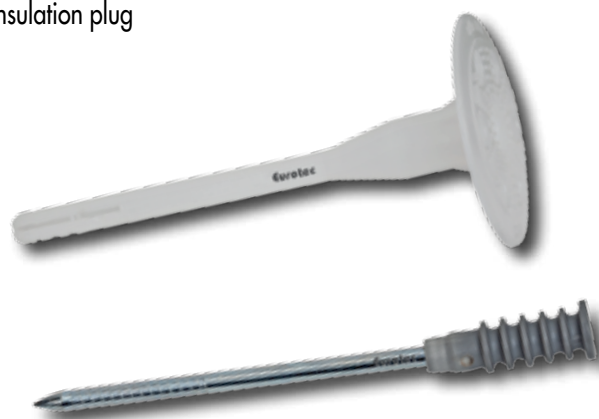


Universally suitable for use in numerous insulating materials and subsurfaces

The Klimax insulation plug allows secure wall-fastening of composite thermal insulation system boards with a thickness of 40–210 mm. The insulation plug is suitable for anchorages in solid sand-lime bricks, porous sand-lime bricks, masonry bricks, vertically perforated bricks, solid lightweight-concrete blocks and porous lightweight-concrete blocks. The product consists of a plastic plug and a nail made of electrogalvanised steel with a pressed-on plastic head. The plastic head prevents the formation of thermal bridges and also provides additional corrosion protection. Installation is performed according to same principle as for a classic nail plug.

Klimax

insulation plug



Advantages of Klimax insulation plugs

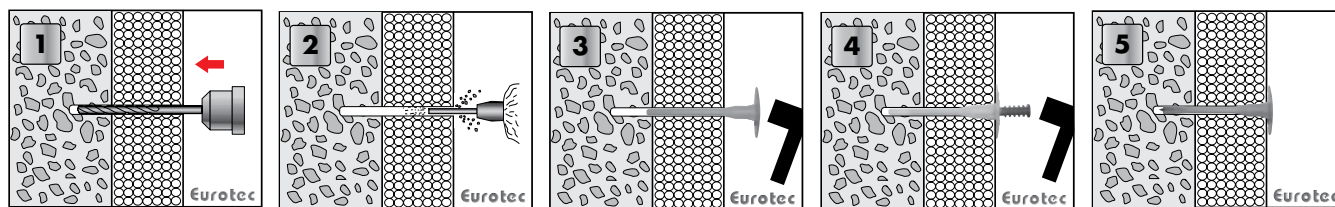
- Fast and efficient assembly
- Universally suitable for numerous insulating materials and subsurfaces
- Flat plug head

Installation parameters

- Nominal drill diameter: 8,00 mm
- Depth of drill hole to lowest point: 40,00 mm
- Effective anchorage depth: 30,00 mm

Art. no.	Dimensions (mm)	Disc diameter (mm)	Insulation thickness (mm)	PU
200027	8,0 x 90	60	40 - 60	250
200028	8,0 x 110	60	80	250
200029	8,0 x 130	60	100	200
200030	8,0 x 150	60	120	150
200031	8,0 x 170	60	140	150
200032	8,0 x 190	60	160	100
200033	8,0 x 210	60	180	100
200034	8,0 x 240	60	210	100

Installation instructions



Klimax ECO 1 / ECO 2

For secure fastening of soft mineral-fibre insulating materials

For through-hole mounting

The Klimax ECO insulation plug allows secure wall-fastening of soft mineral-fibre insulating materials.

The insulation plugs consist entirely of impact-resistant plastic and are suitable for anchorages in concrete, solid sand-lime bricks, masonry bricks and other high-strength building materials.

In through-hole mounting, Klimax ECO insulation plugs are hammered into a drill hole with a diameter of 8,0 mm. In the course of the setting process, the bridges at the tip of the plug deform, producing a clamping pressure that ensures a secure plug grip.

Advantages of Klimax ECO 1/2

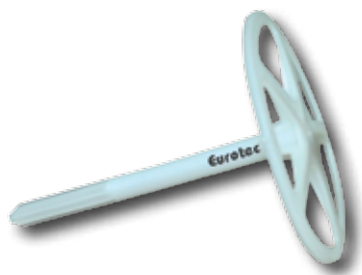
- No thermal bridges
- Time-saving and straightforward impact installation
- Impact-resistant plastic
- Particularly suitable for use with rear-ventilated curtain facades
- Temperature-resistant from -40 °C bis +70 °C

Installation parameters

- Nominal drill diameter: ECO 1 = 8,0 mm
ECO 2 = 8,0 mm
- Minimum drill-hole depth: ECO 1 = 25,0 mm
ECO 2 = 35,0 mm
- Minimum installation depth: ECO 1 = 20,0 mm
ECO 2 = 30,0 mm

Klimax ECO 1

insulation plug, one-piece

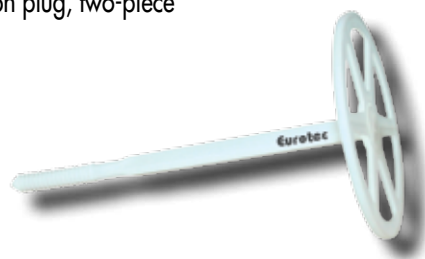


Art. no.	Dimensions (mm)	Disc diameter (mm)	Insulation thickness (mm)	PU
200065	Ø 8,0 x 60	90	30 - 40	250
200066	Ø 8,0 x 80	90	50 - 60	250
200067	Ø 8,0 x 100	90	70 - 80	200
200068	Ø 8,0 x 120	90	90 - 100	250
200069	Ø 8,0 x 140	90	110 - 120	200
200070	Ø 8,0 x 160	90	130 - 140	200

- With a hole in the head to accommodate a mesh fabric holder
- For insulating material thickness of 30–140 mm

Klimax ECO 2

insulation plug, two-piece



Art. no.	Dimensions (mm)	Disc diameter (mm)	Insulation thickness (mm)	PU
200071	Ø 8,0 x 80	90	30 - 50	250
200072	Ø 8,0 x 100	90	60 - 70	250
200073	Ø 8,0 x 120	90	80 - 90	250
200074	Ø 8,0 x 140	90	100 - 110	250
200075	Ø 8,0 x 160	90	120 - 130	250
200076	Ø 8,0 x 180	90	140 - 150	250
200077	Ø 8,0 x 200	90	160 - 170	250
200078	Ø 8,0 x 220	90	180 - 190	250
200079	Ø 8,0 x 240	90	200 - 210	250

- For insulating material thickness of 30–210 mm